

Wireless IP Tuya Video Intercom User Guide



Content

1. Monitor and outdoor pairing	3
1.1 Monitor and outdoor A pairing	3
1.2 Monitor and outdoor B pairing	3
2. Monitor Operation Instruction	4
2.1 Main GUI	4
2.2 Recording Center	5
2.2.1 Photo Record	5
2.2.2 Call Record	5
2.2.3 Message Record	6
2.3 Monitoring Center	6
2.4 Video Intercom	7
Add device to Tuya	7
APP Interface Introduction	9
2.5 User Settings	12
2.5.1 System Info	12
2.5.2 Ringtone Setting	12
2.5.3 Time & Date Setting	13
2.5.4 Video Brightness	13
2.5.5 Volume Setting	14
2.5.6 Language Setting	14
2.5.7 Screen Brightness Setting	15
2.5.8 Wallpaper Setting	15
2.5.9 Screen Saver Setting	16
2.5.10 Delay Setting	17
2.6 System Settings	18
2.6.1 Color Adjustment	18
2.6.2 System Password Setting	19
2.6.3 System Reset	19
2.6.4 Software Upgrade	19
2.6.5 Record Mode Setting	20
2.6.6 Outdoor Station Parameters Resetting	21
2.6.7 Card	21
3. Technical Parameter	22
4. Installation Indoor Monitor	22

1 Monitor and outdoor pairing

After the monitor and outdoor station are powered on, press the LINK button of the indoor monitor with long time, press the outdoor station pairing button at the same time, and release the button when the signal light flashes quickly to complete the pairing.

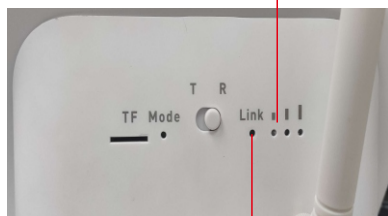
Indoor monitor T stands for STA mode, indicating that the indoor monitor is in receive mode. R indicates AP mode, which indicates that the indoor monitor is in transmit mode.

Note: 1). If the indoor monitor is set to R, the door station needs to be set to T.
 2). If the indoor monitor is T, the door station needs to be set to R.

1.1 Monitor and Outdoor A pairing



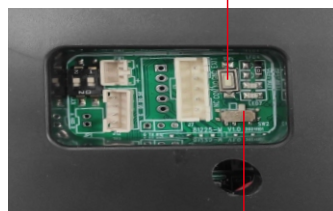
Pic 1.1 Press and hold this button while pairing



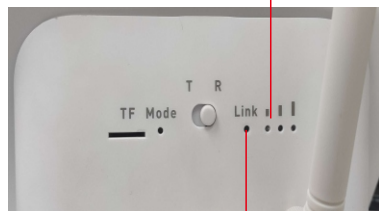
Pic 1.2 Press and hold this button while pairing

The light flashes quickly when pairing is successful

1.2 Monitor and Outdoor B pairing



Pic 1.3 Dial this button to the right side

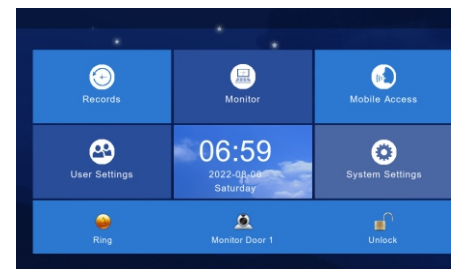


Pic 1.4 Press and hold this button while pairing

The light flashes quickly when pairing is successful




2 Monitor Operation Instruction

2.1 Main GUI









Pic 2.1

- 1) There are Menu, Shortcut keys, Status
- 2) Menu including: recording center, security zone, monitoring center, video intercom, user setup, system setup
- 3) Shortcuts Introduction

Shortcut Icon	Shortcut Name	Funciton
	Ringtone On/Off	Turn On/Off button ringtone or call ringtone
	Door 1 Monitoring	Monitor outdoor station 1
	Unlock	Open situation

4) Status Icon Instruction

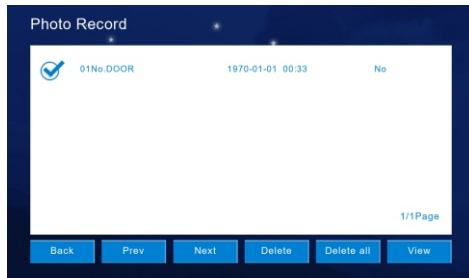
- ① Unread message: 
- ② Missed call: 
- ③ Unread public message: 

Others	Unread Message	Missed Call	Unread public message
			

2.2 Recording Center


2.2.1 Photo Record

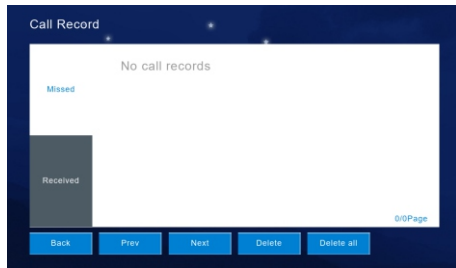
Storage calls, motion detections, snapshot pictures. Click "View" button can review the snapshot pictures.




Pic 2.2.1

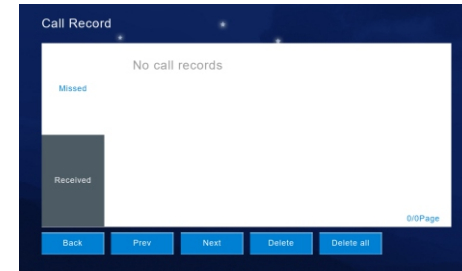
2.2.2 Call Record

- 1) The device will save the call records which includes Missed Call, Dialed Call, Received Call and records in details (Date, Time, Read Status).
- 2) Choose the corresponding device and Click "View  " to check the records in details included pictures or videos.



Pic 2.2.2.1

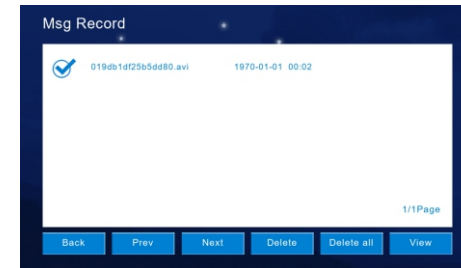
- 3) Redialing the extension monitor when "Redial  " is available to click after you selected a related record from "Missed, Received, Dialed". Meanwhile, you can delete a record or all records after selected.



Pic 2.2.2.2

2.2.3 Message Record

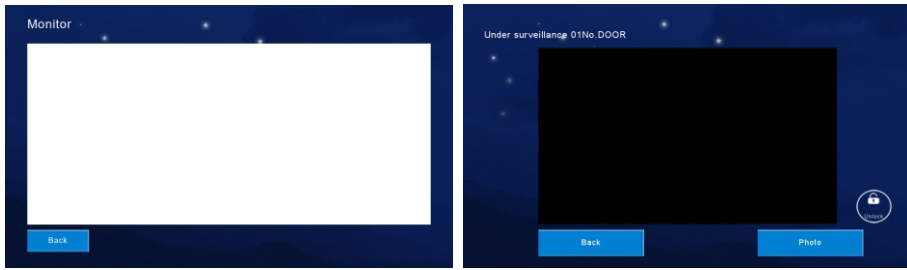
Visitor can leave "Voice or Video Message" to householder, if there is no response after the outdoor station is pressed. And click "View" to know the message details included Device Info, Date Time, Record Status after you selected one record. Meanwhile, you can delete a recorder all records after selected.



Pic 2.2.3

2.3 Monitoring Center

Available to monitor all the outdoor stations, IP camera, and can snapshot pictures and unlock at the monitor interface. The monitor time is 1 min.



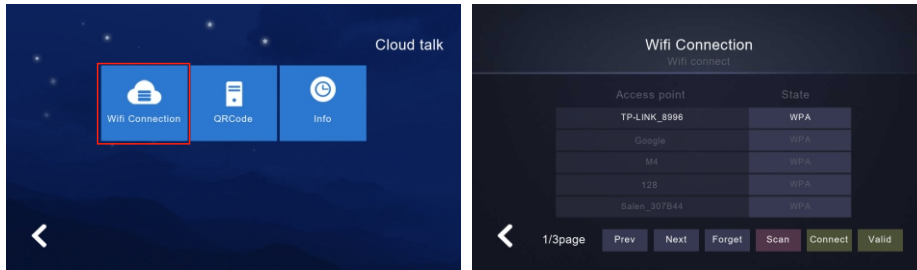
Pic 2.3

2.4 Video Intercom

Network Paring

Indoor monitor setting

- 1). Click “WiFi connection” of indoor monitor, choose family WiFi, connect WiFi. Click QR code, If WiFi remind “Not QR Code info ret-933” , Which need to power off to restart the indoor monitor.



Pic 2.4.3.1

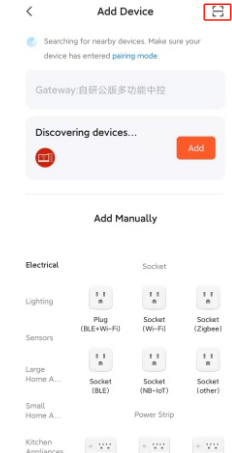
Note: only available to set the “Could Intercom Function” in “01 Monitor Extension (Master unit)”

- 2). APP download and registration
Download Tuya smart APP from Google Play store, IOS download from APP store.
- 3). Run the APP, register an account with correct country and area.
- 4). Login the APP after registration.
- 5). Scan QR code add the monitor into APP. Open Tuya smart APP, click “add device” or “+” on the top right (pic 2.4.3.2).

- 6). Click the “Scan QR code” icon on the top right (pic 2.4.3.3).

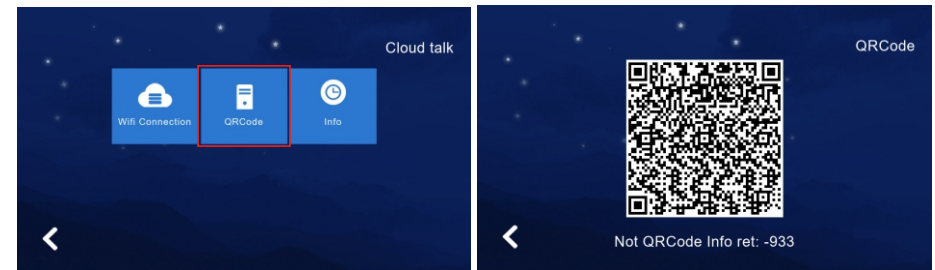


pic 2.4.3.2



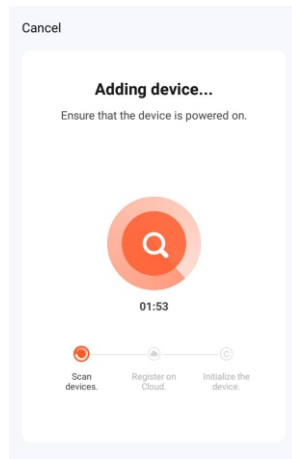
pic 2.4.3.3

- 7). Click “QR code” in indoor monitor, scan it (pic 2.4.3.4).

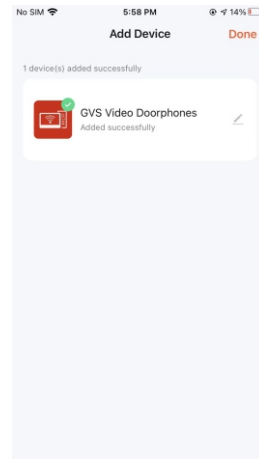


Pic 2.4.3.4

- 8). After scan QR code successfully, Tuya APP turn to below interface (pic 2.4.3.5).
- 9). Wait the progress 100% complete, the device will be successfully added, it will enter the following interface (pic 2.4.3.6).

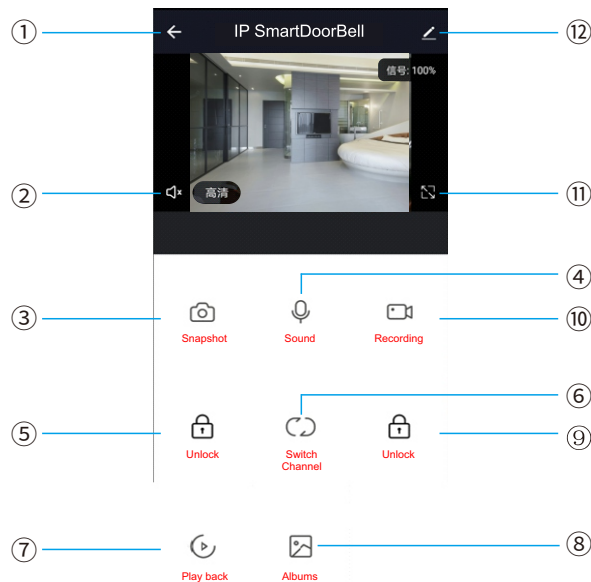


pic 2.4.3.5



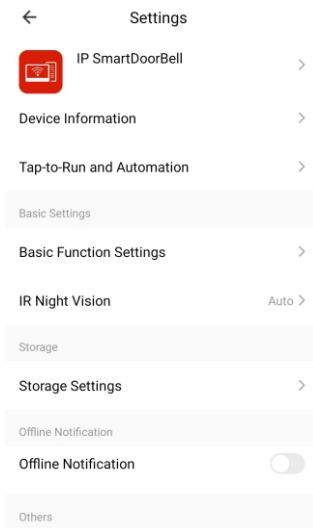
pic 2.4.3.6

APP Interface Introduction



Pic 2.4.3.7

- ① Hang up (back): exist the interface when press this icon while talking or monitoring.
- ② Speaker: Can hear the voice from outdoor station when turn on, and no voice when turn off. Can not talk while monitoring.
- ③ Picture snapshot: Can snapshot the images while talking or monitoring.
- ④ Micphone: Call panel calls and answered on smartphone, turn on this icon, the micphone is on, the voice can go to outdoor station. If not turned on, outdoor station cannot hear the voice from smartphone. This functions is invalid while monitoring.
- ⑤ Outdoor Unlock: Can unlock the lock connected to the call panel while talking or monitoring.
- ⑥ Channel switch: Can switch to monitor other call panels while talking or monitoring. Have 4 channels includes DOOR1, DOOR2, DOOR3, DOOR4, and matches to apartment system or high level system is NO.1 DOOR, NO.2 DOOR, NO.3 DOOR, NO.1 Villa, and matches to villa system is NO.1 Villa, NO. 2 Villa, NO.3 Villa, NO.4 Villa.
- ⑦ Play back: Click here for video play back when have SD card in the monitor and Recording function on APP is on.
- ⑧ Pictures: The snapshot pictures or recorded videos while talking or monitoring saved here. (only for Android smartphone, for IOS phone, it saved in Camera on smartphone.)
- ⑨ Monitor Unlock: Unlock the lock that connected to the indoor monitor while talking or monitoring. (only for the indoor monitor has monitor relay function).
- ⑩ Video Recording: Start record video while talking or monitoring.
- ⑪ Full Screen: display the image full screen.
- ⑫ Settings



Pic 2.4.3.8

- a. Available to, modify the device name.
- b. Available to view the device info.
- c. Available to set the talking mode as single model or double mode at basic settings (Default as single mode).
- d. Have Saving Settings if indoor monitor has SD card. Can view the storage capacity, the event records when the video recording mode is on.
- e. Available to share the device to other smartphone.
- f. Delete the device if need to unbin the device from the smartphone.

Sharing with other phone user:

There are two ways to share your device to other phone users:

1. Enter App----All devices list-----press the device you want to share-----press monitoring mode and press top right corner setting-----Share device-----Add sharing-----input region/ account and done.
(notice: user App without unlock function, only Admin App with unlock function)
2. Enter App-----All devices list-----Me-----Home Management-----Create a home-----Enter home name-----Add member-----App account-----input name/region/account and save.

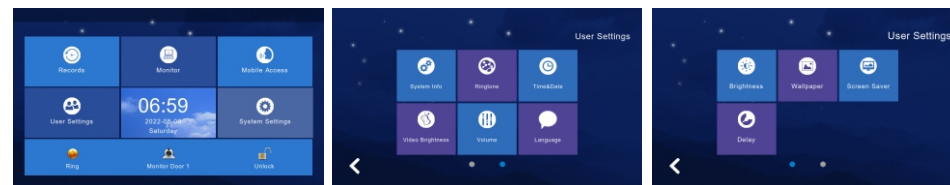
NOTE:

- a. All member in same device can get the message once visitor call from door station.
- b. Admin can add or move all members from App, Enter “Me”-----Home Management-----remove member as you want.

2.5 User Settings

Click to enter “User Settings Interface”.

 : Click “One Circle Button” to enter the next user settings page.



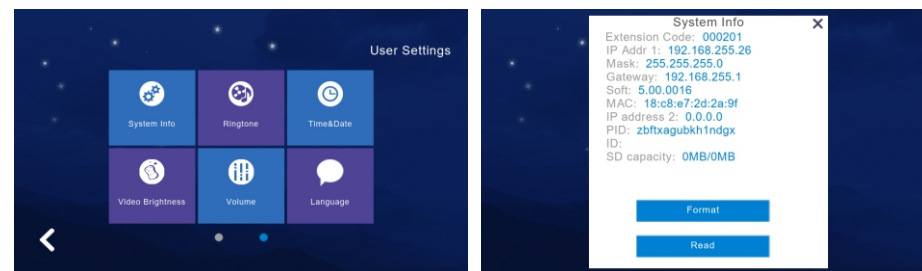
Pic 2.5

2.5.1 System Info

Click “System Info” to know the details: IP address, Extension Code, Mask, Network Configuration Version, Software Version. As picture 2.5.1.

Format: Format SD card.

Read: Insert the SD card which is with the ID file into the monitor, click “read” to get the ID number.

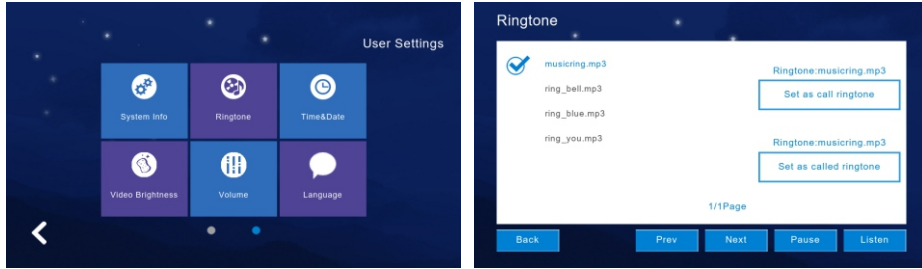


Pic 2.5.1

2.5.2 Ringtone Setting

Support to set the ringtone when the indoor monitor call other device or is called by other device.

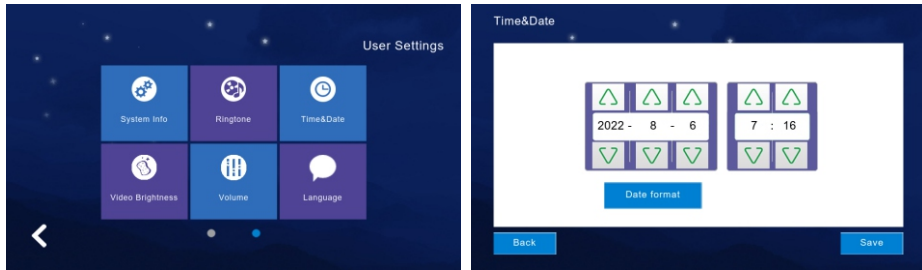
- Available to select the ringtone in “ring” folder from SD Card.
- When you selected one ringtone and click “Listen” for the audition.



Pic 2.5.2

2.5.3 Time & Date Setting

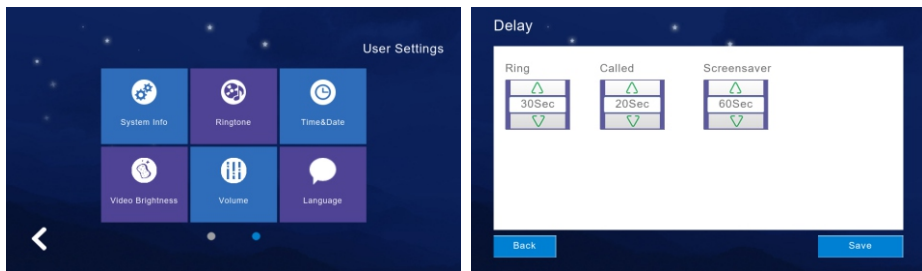
- 1) 24-hour time system as the default and available to set Year / Month / Day / Hour / Minute, Save after setting.
- 2) Format switch: switch the Date format as Y/M/D, D/M/Y, M/D/Y.



Pic 2.5.3

2.5.4 Video Brightness

Adjust video’s brightness, contrast, saturation, hue.



Pic 2.5.4

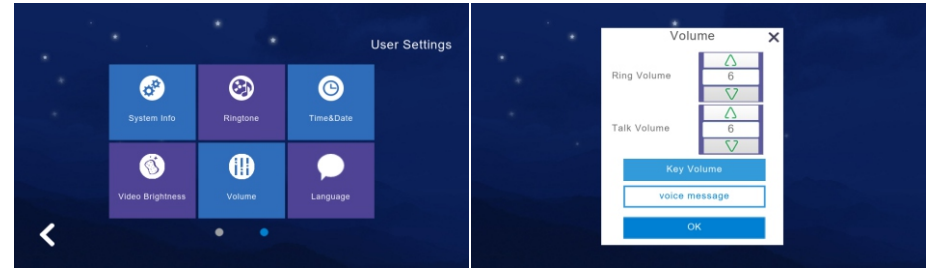
2.5.5 Volume Setting

- 1) Click “Volume” to enter the setting and the below button is to adjust the volume of “Ringtone / Touch Key or Talk”, and there would be the audition after you adjusted the volume ,that need to Click “OK” to set successfully if you adjusted the volume.

- : Increase the volume (+)
- : Decrease the volume (-)

Note: “6” as the default volume and the volume range is “0-15”.

- 2) Key tone switch: turn on or off the key tone, click it to turn dark blue means turn on.
- 3) Voice Message On/Off: Remind to leave messages when not answered the call from the visitor at outdoor sation. Default is off, click to dark blue is on.

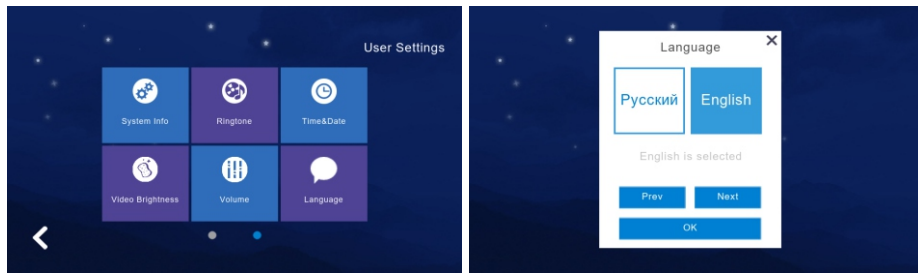


Pic 2.5.5

2.5.6 Language Setting

Click “Language” to enter the setting, and it is available for Russian, English, Chinese, Spanish, Turkish, Portuguese, Dutch, French, Italian, Bulgarian. When selected one language and need to click “OK” to set successfully.



- “Prev”: Page Up
- “Next”: Page Down



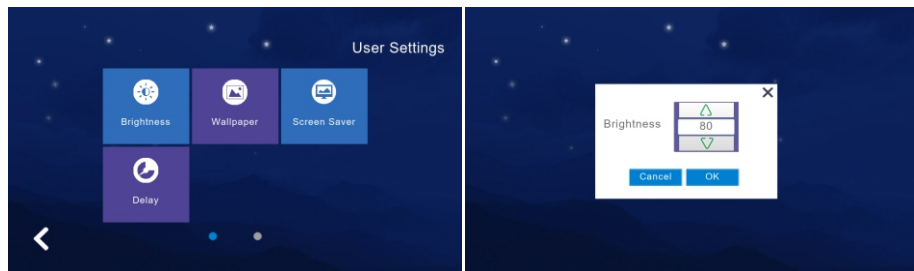
Pic 2.5.6

2.5.7 Screen Brightness Setting

Click “Brightness” to enter the setting, then,adjust the brightness accordingly and need to Click “OK” to set successfully if you adjusted the brightness.

-  : Increase the brightness (+)
-  : Decrease the brightness (-)

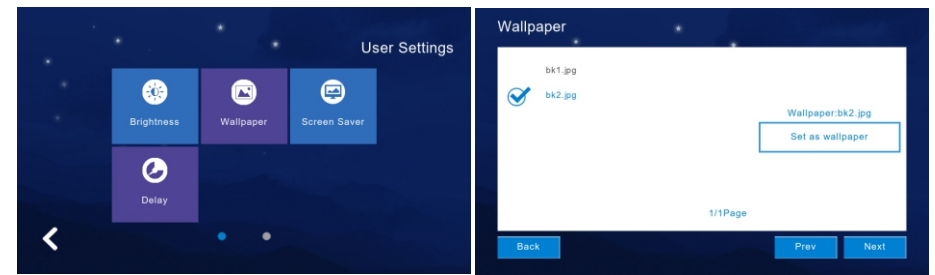
Note: “60” as the default screen brightness and the brightness range is “1-100”.



Pic 2.5.7

2.5.8 Wallpaper Setting

Click “Wallpaper” to enter the setting, and when selected one picture, click “Set as wallpaper” to set successfully. And it is available for selecting the picture in “Wallpaper” folder from SD Card.



Pic 2.5.8

2.5.9 Screen Saver Setting

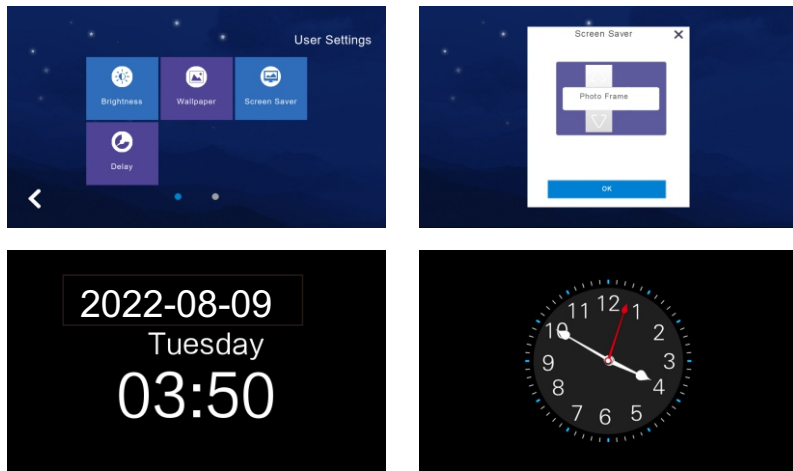
Click “Screen Saver” to enter the setting that is including Click “Delay” to enter the setting that is including “Black”, “Time”, “Clock”. It will be in “Screen Saver” status without any operation for 60 seconds automatically. And when you selected one type and need to click “OK” to set successfully. Screen saver will turn off if without any operating in 60s.

- “ Black ” is stand for “ Black Screen Saver ”.
- “ Time ” is stand for “ Time Screen Saver”.
- “ Clock” is stand for “ Clock Screen Saver”.

Note: The system default in “Black Screen” status would be started automatically from 0:00 to 06:00 am.

Picture screensaver:

1. Carousel the pictures in the SD card in the standby mode, after carousel one hour the screen will be turned off.
2. User need to create a folder named in “screensaver” in SD card, and put the pictures into the folder.
3. The pictures put in “screensaver” has below requirements:
 - Picture format is JPG
 - Picture resolution ≤ 1920*1080
 - Picture file size ≤ 3 MB



Pic 2.5.9

2.5.10 Delay Setting

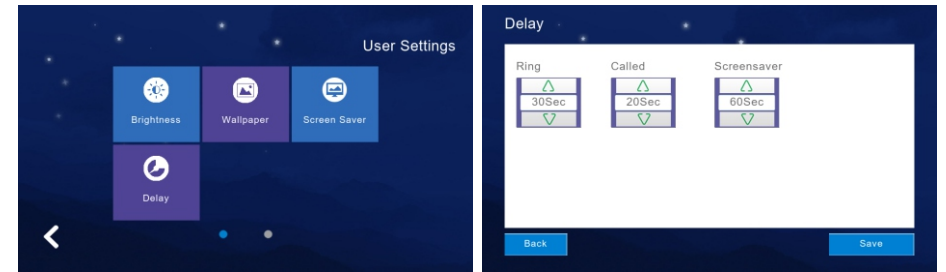
There are 3 kinds of settings in the delay settings, which are:

Ringing time (can be set to 5-90 seconds, the default value is 30 seconds): the ringing time when the indoor monitor is called.

No ring duration (can be set to 0-60 seconds, the default value is 0 seconds): when an indoor monitor is called, which indicates no ring duration. This is the time from the end of the ringing of the indoor monitor to the end of the hanging un. During this period, the bell does not ring, but still can answer the hanging up normally.

Screen saver duration (can be set to 30, 60, 90 seconds, the default value is 60 seconds): when no operation is performed on the indoor monitor until the screen saver is entered.


After setting, click the save button to save the settings.

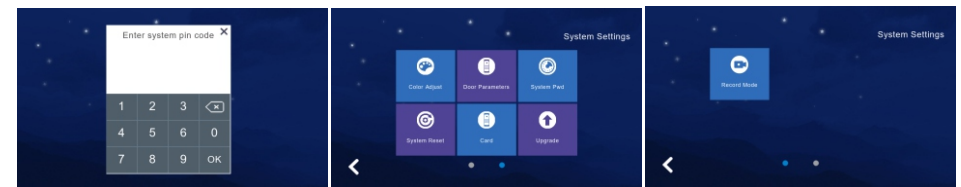


Pic 2.5.10

2.6 System Settings

Click “System Settings” in Main GUI and input the system pin code “666 666” to enter the system settings.

 : Click “One Circle Button” to enter the next system settings page.

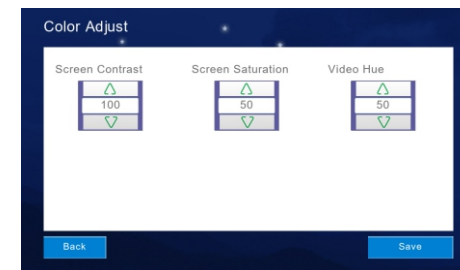


Pic 2.6

2.6.1 Color Adjustment

You can set the contrast, saturation, and video color of the screen. The parameter setting range is 1~100. After setting, click Save.

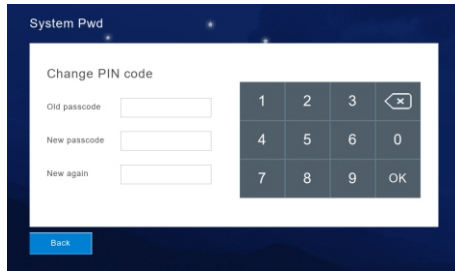
Click “One Circle Button” to enter the next system settings page firstly. “Color Adjust” is including Screen Contrast, Screen Saturation, Video Hue, Video Brightness, Video Contrast, Video Saturation. And need to Click “Save” to set successfully.



Pic 2.6.1

2.6.2 System Password Setting

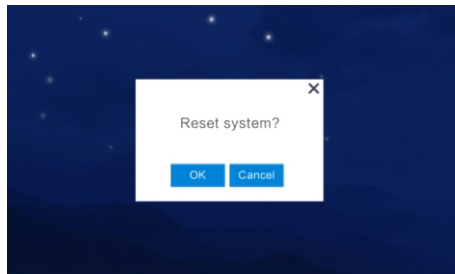
Click “System Password” to enter the setting menu that input the old passcode “666 666” firstly. And new passcode need to input twice, then, click “OK” to set successfully.



Pic 2.6.2

2.6.3 System Reset

Click “System Reset” to have a notification whether “Reset system”. And click “OK” to reset the system successfully that clean all settings what you changed and records in the monitor, then, it will be the Factory Settings Default. Click “Cancel” will return the System Settings Menu. As picture 2.6.3.



Pic 2.6.3

2.6.4 Software Upgrade

Caution: Don't shut off power during the software is upgrading or the indoor monitor will not work any more.

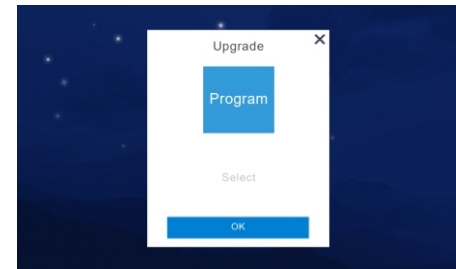
Support SD Card Software Upgrade that need to put “image.dd” and “NetCfg.dat” in related SD Card.

Assembly SD Card in the indoor monitor and shut off power to reset the indoor

monitor accordingly. Then, enter “Upgrade” menu as the above instructions. Select “NetCfg” or “Program” to upgrade the Program and Network Configuration separately. Select “NetCfg” firstly and click “OK” to upgrade the Network Configuration, it will reboot automatically to be upgrading successfully. Select “Program” firstly and click “OK” to upgrade the Program, it will reboot automatically to be upgrading successfully.

Support SD card upgrade:

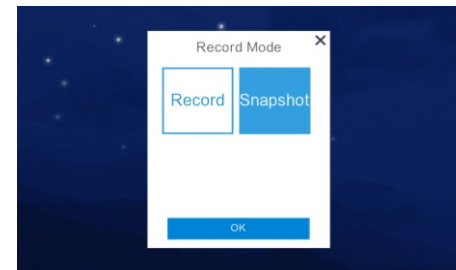
first put the program iMage.dd and network configuration table netcfg.dat into the SD card. Insert the SD card into the indoor monitor and restart the power off. Enter the “System Settings” and enter the initial password to “666666”. Select upgrade the software “program”. Select “Program” click the “OK” button to start upgrade. After the upgrade is upgraded to complete the device restart, complete the “Program” upgrade.



Pic 2.6.4

2.6.5 Record Mode Setting

“Record Mode” is including Record and Snapshot, to set the outdoor station record mode when the householder missed the call or answered the call. Record is “take the video of visitor” and Snapshot is “take the photo of visitor”.

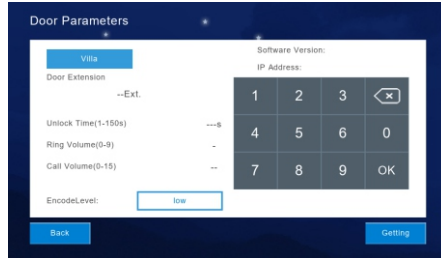


Pic 2.6.7

2.6.6 Outdoor Station Parameters Resetting

Support to review and change High level and Villa Outdoor Station Parameters.

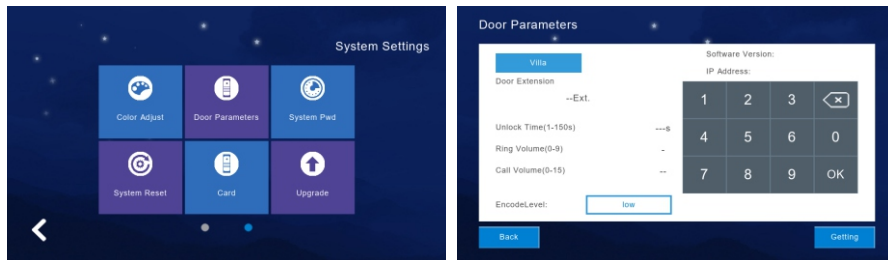
- 1). Input "Door Extension Number" and click "OK" to have related door extension parameters such as "Unlock Time", "Ring Volume", "Call Volume", "Motion Sensitivity", "Software Version".
- 2). Support to change the parameters, need to delete the previous parameters and input new ones. Then, click "OK" to change successfully.



Pic 2.6.8

2.6.7 Card

- 1). Enter the room number of the outdoor station first, and default to 01.
- 2). Click Mode +, the door opportunity will prompt DiDi twice.



Pic 2.6.9

3 Technical Parameter

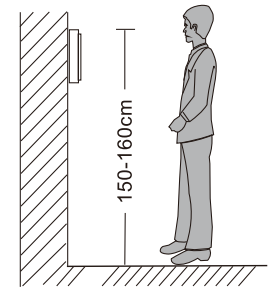
- Display: 7" TFT LCD(color)
- Resolution: 1024*600
- Vibration: Bell ≥ 70 dB
- Power: DC
- Current: < 350 mA
- Working temperature: $-20^{\circ}\text{C} \sim +70^{\circ}\text{C}$
- Max power consumption: < 5 W
- Installation: surface mounted

4 Install The Indoor Monitor



Note:

- Please be far from the devices with intense radiation: TV, DVR, etc.
- Do not disassemble privately to avoid the electric shock.
- Do not drop, shake or knock the device, otherwise will damage the elements.
- Choose the best position to install, the horizontal view is 150cm.
- Please power down before installation.
- Keep at a distance of more than 30cm with AC power to avoid interference.
- Away from the water, magnetic field and chemicals.



How to install the indoor unit

